

Cytoskeletal dynamics of human erythrocyte

Ju Li*, George Lykotrafitis†, Ming Dao†, and Subra Suresh†*§

*Department of Materials Science and Engineering, Ohio State University, Columbus, OH 43210; and †Department of Materials Science and Engineering and ‡Division of Biological Engineering, Massachusetts Institute of Technology, Cambridge, MA 02139

Communicated by L. B. Freund, Brown University, Providence, RI, January 10, 2007 (received for review November 15, 2006)

The human erythrocyte (red blood cell, RBC) demonstrates extraordinary ability to undergo reversible large deformation and fluidity. Such mechanical response cannot be consistently rationalized on the basis of fixed connectivity of the cell cytoskeleton that comprises the spectrin molecular network tethered to phospholipid membrane. Active topological remodeling of spectrin network has been postulated, although detailed models of such dynamic reorganization are presently unavailable. Here we present a coarse-grained cytoskeletal dynamics simulation with breakable protein associations to elucidate the roles of shear stress, specific chemical agents, and thermal fluctuations in cytoskeleton remodeling. We demonstrate a clear solid-to-fluid transition depending on the metabolic energy influx. The solid network's plastic deformation also manifests creep and yield regimes depending on the strain rate. This cytoskeletal dynamics model offers a means to resolve long-standing questions regarding the reference state used in RBC elasticity theory for determining the equilibrium shape and deformation response. In addition, the simulations offer mechanistic insights into the onset of plasticity and void percolation in cytoskeleton. These phenomena may have implication for RBC membrane loss and shape change in the context of hereditary hemolytic disorders such as spherocytosis and elliptocytosis.

cytoskeleton remodeling | computer simulation | fluidization | plasticity | spectrin–actin dissociation

During its 120-day life span, a red blood cell (RBC) circulates a million times in human body, often squeezing through narrow capillaries. The erythrocyte's remarkable mechanical properties originate from the unique architecture of its cell wall, which is the main load bearing component as there are no stress fibers inside the cell. The cell wall comprises a spectrin tetramer network tethered to a phospholipid bilayer (1, 2). It is very flexible, and yet resilient enough to recover the biconcave shape whenever the cell is quiescent (see Fig. 1). It has been proposed that the spectrin network connectivity is not fixed and can experience extensive remodeling as the RBC undergoes large deformation. Experiments show that, under physiological conditions, the spectrin tetramers in an unstressed intact cell wall exist in rapid dynamic equilibrium with the dimers, and that shear-induced cell wall deformation displaces the balance in favor of the dimers (3). Here, the cell wall behaves as a weak elastic solid at low strain levels, whereas it can be fluidized beyond a certain level of shear deformation, similar to soft matter such as emulsions and colloidal pastes (4, 5). Upon unloading, the dynamic stability is shifted toward tetramers and the stiffness of the cell wall increases. Experiments also suggest that cytoskeleton remodeling can be regulated by biochemical factors such as Ca^{2+} and ATP (adenosine 5'-triphosphate) concentrations (6, 7). It has been postulated that phosphorylation affects spectrin–actin binding and produces changes in the shape and deformability of human RBC (8–11); this is equivalent to the injection of metabolic energy specifically to spectrin–actin junctions, thereby inducing local rupture between actin and spectrin. Prior analytical modeling addressed the impact of ATP-induced cytoskeletal defects arising from spectrin–actin dissociation on RBC shape and membrane fluctuation (12). Activation of these biochemical processes can result in lower connectivity and, consequently, a softer or even fluidized net-

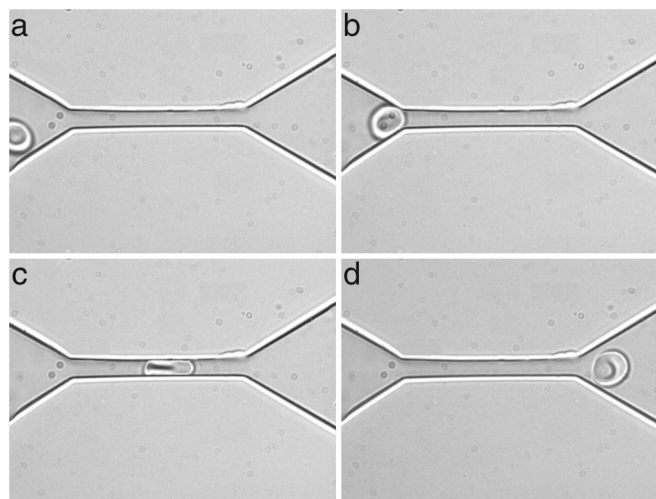


Fig. 1. An experimental *in vitro* demonstration of the “fluidization” of a healthy human RBC through a microfluidic channel at room temperature. The series of images show the shape of an RBC as it is squeezed through a $4\ \mu\text{m} \times 4\ \mu\text{m}$ channel made of polydimethylsiloxane (PDMS), under a pressure differential of 1.5 mm of water. Note the recovery of shape upon egress from the channel. Images *a*, *b*, *c*, and *d* were taken at relative times of 0, 0.4, 0.8, and 1.4 s, respectively.

work. Therefore, the confluence of mechanical strain energy, nonspecific thermal fluctuation energy, and specific biochemical activation energy fundamentally influences the behavior of the cytoskeleton and the membrane tethered to it.

Optical tweezers (OT) experiments (13, 14) have shown that the membrane with cytoskeletal attachment can sustain significant shear, with an estimated shear modulus $\mu = 4\text{--}10\ \mu\text{N/m}$. Indeed, the in-plane shear energy that an RBC can apparently store in these OT experiments is $\approx 200\ \text{pN} \times 8\ \mu\text{m}/2 = 5,000\ \text{eV}$, which far exceeds the total bending energy it stores ($\approx 8\pi\kappa = 50\ \text{eV}$), for bending modulus $\kappa \approx 2 \times 10^{-19}\ \text{J}$ (15). Classic Canham–Helfrich explanation of the biconcave equilibrium shape of erythrocyte (16, 17) requires minimization of total bending energy only, without considering the much larger in-plane shear energy. Equilibrium shape calculations with inclusion of in-plane energies, at both continuum (14, 18) and discrete spectrin network (14, 19) levels, thus exhibit a seemingly paradoxical behavior. At the experimental range of μ and κ values, the biconcave equilibrium shape is rarely obtained in numerical simulations without careful tuning of the stress-free reference state for the in-plane energy.

Based on extensive parametric studies, the following mechanistic hypothesis was proposed (14) to resolve the paradox. In an ideal

Author contributions: J.L., G.L., M.D., and S.S. designed research, performed research, analyzed data, and wrote the paper.

The authors declare no conflict of interest.

Abbreviations: OT, optical tweezer; CD, cytoskeletal dynamics.

§To whom correspondence should be addressed. E-mail: ssuresh@mit.edu

This article contains supporting information online at www.pnas.org/cgi/content/full/0700257104/DC1.

© 2007 by The National Academy of Sciences of the USA

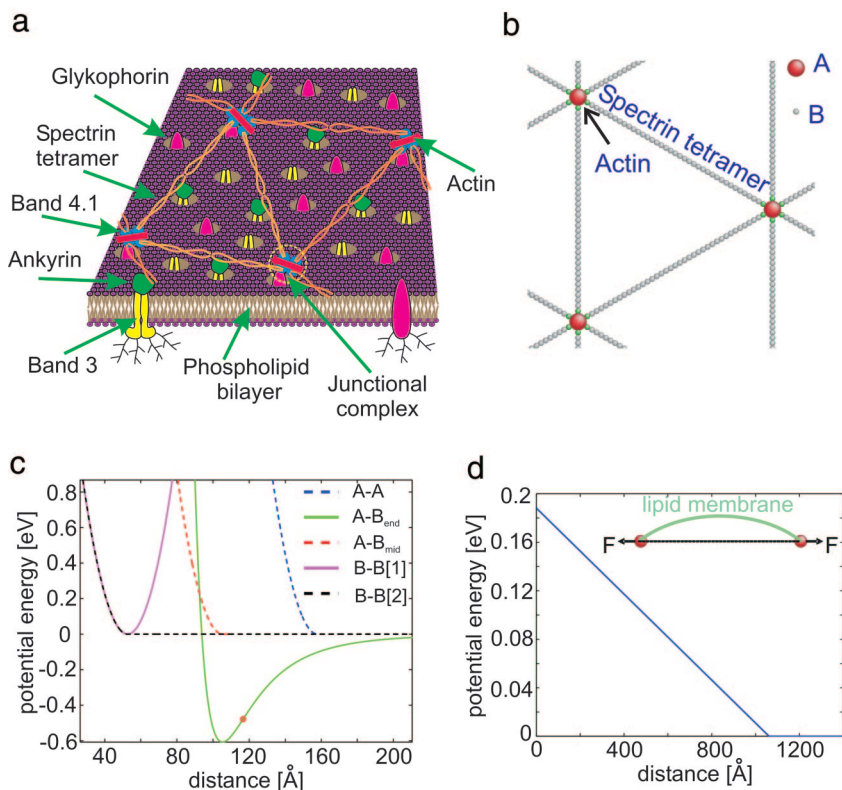


Fig. 2. Coarse-grained cytoskeletal dynamics computer simulation. (a) Schematic of cytoskeleton of the human RBC. (b) A minimal physically realistic model with breakable actin–spectrin interaction. A (red sphere) represents an actin protofilament, and B (green and gray spheres) represents a spectrin segment. Only the two ending spectrin units (green spheres) of a spectrin chain can bind to A. (c) Interaction potentials between A–A (steric repulsion), A–B_{end} (Lennard–Jones potential), A–B_{mid} (steric repulsion), B–B[1] (spring potential between nearest neighbor spectrin units), and B–B[2] (steric repulsion between any other spectrin units). B_{mid} represents a nonending spectrin unit, and B_{end} represents an ending spectrin unit. Note that A–B_{end} forms breakable linkage. (d) Lipid membrane introduces additional effective repulsion between A–A (12), modeled by a linear potential with cutoff.

limit, for any RBC shape, the cytoskeleton always undergoes remodeling in topological connectivity at a certain rate to relax its in-plane shear elastic energy to zero. Therefore in considering the equilibrium shape of an RBC, one does not need to account for the in-plane shear energy, even though in OT experiments it can be injected temporarily into the cytoskeleton. The remodeling process has been studied heuristically in (14) by simulating simple liquids confined on a surface and interacting via the Lennard–Jones or Stillinger–Weber potentials (20). This produces cytoskeleton that appears similar to atomic force microscopy scans (21–23), akin to reverse Monte Carlo (24) modeling. Despite these considerations, detailed simulations of spectrin network dynamics promoting plasticity and fluidization of RBC are presently unavailable.

In this paper, a cytoskeletal dynamics (CD) simulation framework is developed to study the RBC spectrin network remodeling process and fluidization. The framework comprises the following key ingredients: (i) a minimal representation of the cytoskeleton geometry that can self-organize and dynamically evolve, and (ii) mechanisms for nonthermal energies such as the strain energy or specific biochemical energy to influence and regulate structural evolution. By abstracting out many details, such a cytoskeletal dynamics simulation provides detailed mechanistic insights into the mechanics and physics of RBC deformation. This model could then be used in studying RBCs with cytoskeletal defects which are typical in blood disorders such as hereditary spherocytosis and elliptocytosis (25, 26). The present work thus seeks to provide a significant advance over previous models that were either formulated at the continuum scale (18), thereby ignoring the discrete cytoskeletal structure, or that assumed a fixed cytoskeleton connectivity (14, 19, 27–30), thereby useful only to study elastic cell deformation without

any dynamic cytoskeletal remodeling due to mechanical, thermal, or chemical driving forces.

Computational Model

The erythrocyte cell wall consists of a lipid bilayer, cytoskeleton network, and integral membrane proteins. The intramembrane proteins band-3 and glycophorin tether the cytoskeleton network to the bilayer via additional binding proteins (e.g., ankyrin and 4.1). A schematic representation is shown in Fig. 2a. Spectrin is a protein tetramer formed by head-to-head association of two identical heterodimers (31). Each heterodimer has an α -chain, which has 22 triple-helical segments, and a β -chain, which has 17 triple-helical segments. A minimalistic representation of spectrin is therefore chosen to be $S = 39$ spherical beads (B in Fig. 2b) connected by $S - 1$ unbreakable springs. The spring potential, $V_{BB}(r) = k_0(r - r_0)^2/2$, is plotted as the magenta curve in Fig. 2c, with equilibrium distance $r_0 = L_{\max}/(S - 1)$, where L_{\max} is the contour length of the spectrin (chosen to be 200 nm). Thus, $r_0 = 5.26$ nm. The spring constant k_0 is chosen later. Beads that are not topologically connected on the chain, or are on different chains, repel each other sterically. Their interaction potential is taken to be simply $V_{BB}(r)H(r_0 - r)$, shown as the black dash curve in Fig. 2c, where $H(x)$ is the Heaviside step function.

Among the S beads of a spectrin chain, there are two special beads colored in green in Fig. 2b that represent the free ends. They can bind noncovalently to junction complexes (2), composed of a short actin proto-filament and protein band 4.1. Experiments indicate that, without protein 4.1, spectrin only binds weakly to actin, with equilibrium association constant $K_1 \approx 5 \times 10^3 \text{ M}^{-1}$. With 4.1, however, strong binding occurs, forming ternary complexes with equilibrium constant $K_2 \approx 1 \times 10^{12} \text{ M}^{-1}$ (32). A separate

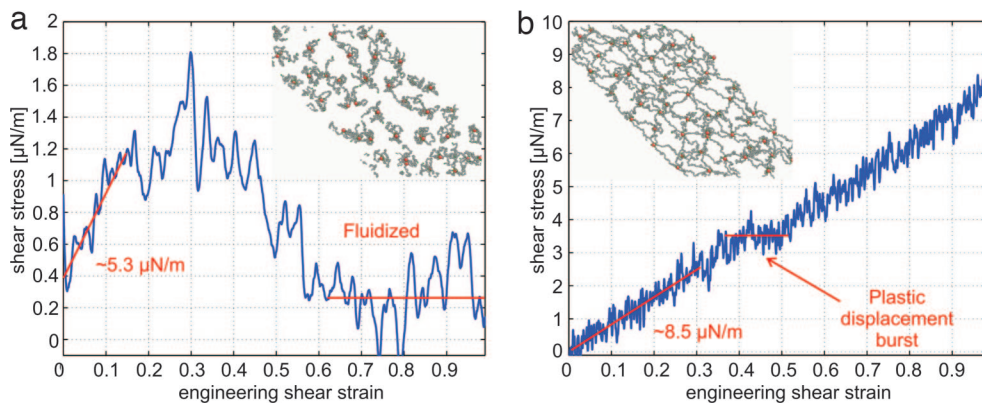


Fig. 4. Shear stress-strain response of network at strain rate $\dot{\gamma} = 3 \times 10^5$ per s. (a) Energy hit rate 10 per μs and final network structure at $\gamma = 1$ (Inset). (b) Energy hit rate 2.5 per μs and final network structure at $\gamma = 1$ (Inset).

in μ_0 is perhaps fortuitous without any intentional fitting to the shear response.

At large shear strains, $\gamma = 80\%$, the tangent shear modulus stiffens to $\mu_t \approx 25 \mu\text{N/m}$. This value then amounts to a prediction of the simulation. Even at $\gamma = 1$, few topological defects appear in the simulation. The stress-strain response is nearly perfectly reversible and elastic. Again, the agreement is good with OT experiments (13, 38). To match the experiments up to 100% RBC elongation with a finite-element model, a third-order hyperelasticity constitutive relation is needed for cell wall material with stiffening behavior (13, 38). The value of μ_t estimated from finite element simulations is $20 \mu\text{N/m}$ at $\gamma = 1$.

Until now, the cytoskeleton behaves just like an ordinary inert material. Room-temperature thermal fluctuations do not overcome A–B binding to effect topology change. Because of homeostasis (nearly constant body temperature), cytoskeletal changes cannot arise from significant temperature changes. However, the CD could be driven by chemical energy flux, pushing the system out of equilibrium (39). To explore this effect, we mimic biochemically activated actin–spectrin dissociation by an instantaneous kinetic energy transfer of $X = 0.7 \text{ eV}$ to an ending B bead. The magnitude of X matches roughly the energy release from ATP hydrolysis reaction, which is $\approx 20\text{--}25k_B T$ per molecule (40). The direction of kinetic energy transfer is random in the 4π spherical angle. Because the binding energy between A–B is $\varepsilon = 0.6 \text{ eV}$, it is highly likely that such a hit would lead to dissociation of the particular AB junction. The schedule of kinetic energy hits conforms to a random Poisson process, with equal probability for all spectrin ends, irrespective of their hit histories. The center-of-mass of the cytoskeleton is held fixed at all times.

Initially, we assign a hit rate of $H = 100$ per μs per spectrin end without simultaneously shearing the cytoskeleton. The network quickly becomes proliferated with topological defects, as indicated by the $\langle d \rangle$ statistics (see SI Fig. 6a). Larger and larger holes appear, which eventually percolate through the supercell (41). The network then loses shear-bearing capability; that is, the solid is completely fluidized at $H = 100$ per μs without mechanical stress (gel-to-sol transition). The fluidization process reflects a dynamic percolation of broken bonds across the network (41), which could lead to mass and momentum transport even below the static percolation limit. The importance of the percolation limit of broken bonds to shear elasticity was pointed out in ref. 12.

To see the “annealing” or “recovery” behavior (sol-to-gel transition), we then turn off the kinetic energy hits ($H = 0$), and the cytoskeleton reconstitutes readily, as indicated by the $\langle d \rangle$ statistics (see SI Fig. 6b), within the CD simulation time scale. The network that reforms from fluidized state does not have a perfect triangular-net topology, it contains topological “mistakes,” but structural similarity to a triangular network is strong. The shear stress-strain

response (not shown) is similar as well. To further confirm this finding, we plot the potential energy U of reformed network (SI Fig. 6b Inset), which approaches that of the perfect network reference value over time. Thus the cytoskeleton “re-gels” from fluidized state after biochemical energy influx is turned off, with a time constant $\tau_g \approx 0.1 \mu\text{s}$, taken from the half life of $\langle d \rangle$ and U recovers in SI Fig. 6b.

The characteristic recovery time τ_g in present simulation is perhaps much faster than that in reality. A–B association is represented by a smooth potential $V_{AB}(r)$ with no activation energy barrier (Fig. 2c). Thus, once A loses one B association and its d is < 6 , it turns on a smooth attractive force field with capture diameter $\approx 40 \text{ nm}$ for all free spectrin ends. In reality, both association and dissociation reactions have activation barriers (42), catalyzed by protein kinases (7) as well. We now nondimensionalize all time and rate labels by τ_g . The fluidization at $H = 100$ per μs is thus attributed to $H\tau_g \gg 1$. In other words, the rate of biochemical activation and induced dissociation far exceeds that of intrinsic recovery, whereby a disconnected spectrin chain reconnects somewhere to reduce the free energy. The recovery rate depends on applied stress and temperature, which change driving force and kinetics of reattachment (forming a stretched chain with two constrained ends versus a coiled chain with one or two free ends).

We next choose the borderline case of $H = 10$ per μs , $H\tau_g = 1$. The cytoskeleton shear stress vs. shear strain is plotted in Fig. 4a, at the same strain rate $\dot{\gamma} = 3 \times 10^5$ per s or $\dot{\gamma}\tau_g = 0.03$. The linear modulus μ_0 is softened from 10 to $5.3 \mu\text{N/m}$. More dramatically, the shear stress vanishes above $\gamma = 60\%$. A look at the structure indicates that the cytoskeleton has indeed fluidized (41), with large holes percolating through the simulation supercell (Fig. 4a Inset). This behavior is in stark contrast to Fig. 3 with no biochemical activation, where the network deforms elastically, and even stiffens to $\mu_t \approx 25 \mu\text{N/m}$. Thus, at hit rate $H\tau_g \approx 1$, a softened, but still solid, cytoskeleton is obtained at small strain, which transforms into fluid at critical strain $\gamma_{\text{fluidize}} \approx 50\%$. RBCs commonly encounter such strains in circulation (43).

The mechanism for this fluidization transition could be summarized as follows. Under shear strain, some spectrin chains are elongated and some shortened, depending on their alignment to the principal axes of stress. The elongated chains exert an effective tensile force F_{WLC} at the A–B junction roughly according to worm-like chain entropic force (14). At small γ , the maximum elongation is small, so even after dissociation the probability of reattachment is large. However, at large γ , the initial elongation is too large (see Fig. 4b Inset). Therefore, once a spectrin link is broken, the chain recoils and becomes exponentially unlikely for the spectrin chain to fluctuate back to the original length to reestablish the connection.

The response seen in the above CD simulation comes from a

nonequilibrium system, which cannot be made similar to an inert system by simple scaling (law of corresponding states). This is because one essential element, F_{WLC} , is proportional to $k_B T$, where T is the thermodynamic temperature; but the other element, the rate of A–B association/dissociation, is related to the rate of phosphorylation. This is analogous to the concept of two temperatures (39), one for general degrees of freedom including chain vibrations and bending (thermodynamic temperature) and one just for topological change (effective or “structural evolution” temperature refs. 5, 44, and 45). When the thermodynamic temperature is raised, due to equi-partition theorem, all degrees of freedom tend to be equally excited. In contrast, biochemical activation is highly targeted due to the specific biochemical machinery required, e.g., for phosphorylation; this is reflected in our model, because when H is raised, only the A–B associations (strategic nodes of the network) are strongly excited. The effective temperature concept is generic in soft glassy matter (45), irradiated materials (46), and generally nonequilibrium materials (39) under mechanical, chemical, or radiative energy influxes. However, it is perhaps in the biological context that the concept is put to use in a very sophisticated manner (47). Biochemical activation is specific and local. Only certain cytoskeletal proteins can be activated to elicit certain structural response.

We then examine the other limit, $H\tau_g \ll 1$, with $H = 2.5$ per μs . The shear stress–strain response is plotted in Fig. 4b, with final configuration at $\gamma = 100\%$ (Fig. 4b Inset). The cytoskeleton is a solid throughout the entire range of strain, because although voids exist, they never percolate through the network. Its linear modulus μ_0 ($8.5 \mu\text{N/m}$) is very close to that with no energy hits. The difference with the zero chemical energy influx situation (Fig. 3) is that there is a plastic displacement burst at $\gamma = 35\text{--}50\%$, similar to incipient plasticity events in metals (48). However, the system is still essentially a solid. Therefore, we conclude that, at $H\tau_g \ll 1$, the cytoskeleton behaves like a plastically deforming solid, with the rate of plastic deformation governed by H and stress.

The strain γ_F at the first plastic displacement burst depends on the energy hit-rate H , the energy per hit X , and the spectrin–actin association energy ε . SI Table 1 shows that γ_F and the shear moduli (at the initial elastic response) decrease as the energy hit-rate increases from 0 to 10 per μs per spectrin. The constant strain rate used in all of the deformation simulations, $\dot{\gamma} = 3 \times 10^5$ per s, is very high in terms of absolute value. However, if scaled by τ_g , the nondimensionalized strain rate $\dot{\gamma}\tau_g$ is actually quite reasonable with a clear physical meaning. Take the last case of $H\tau_g = 0.1$: combined with $\dot{\gamma}\tau_g = 0.03$, this would mean that during the course of straining the cytoskeleton to 100%, each spectrin end would receive 3.3 biochemical activation hits on average. We have also investigated the effect of strain rate on γ_F (SI Table 2). When $H = 0$, γ_F is large ($>100\%$) and nearly independent of strain rate. At finite H , we discovered two regimes of behavior. Take the case of $H\tau_g = 0.1$. When $\dot{\gamma}\tau_g < 0.014$, γ_F is sensitive to $\dot{\gamma}$ in almost linear relationship; but when $\dot{\gamma}\tau_g > 0.014$, γ_F becomes much less sensitive to $\dot{\gamma}$. The reason is that, at small $\dot{\gamma}$, the first plastic displacement burst is governed more by damage accumulation caused by H than by mechanical stress τ . The time t_D to accumulate enough damage to facilitate a displacement burst depends more on H , and less on τ or γ , so $\gamma_F = \dot{\gamma}t_D$ can be approximated by $\gamma_F \approx \dot{\gamma}t_D(H)$, and thus the linear relationship. But when $\dot{\gamma}$ is large, stress ramping is fast compared with damage by H , and the high stress begins to play a much more substantial role in inducing displacement burst, and the strain threshold for this to happen becomes more constant. These two plastic deformation regimes are analogous to the creep and yield regimes of engineering materials, which are sensitive (much less sensitive) to the strain rate at small (large) strain rates, respectively, with the latter regime possessing a much more clear-cut yield strain threshold behavior.

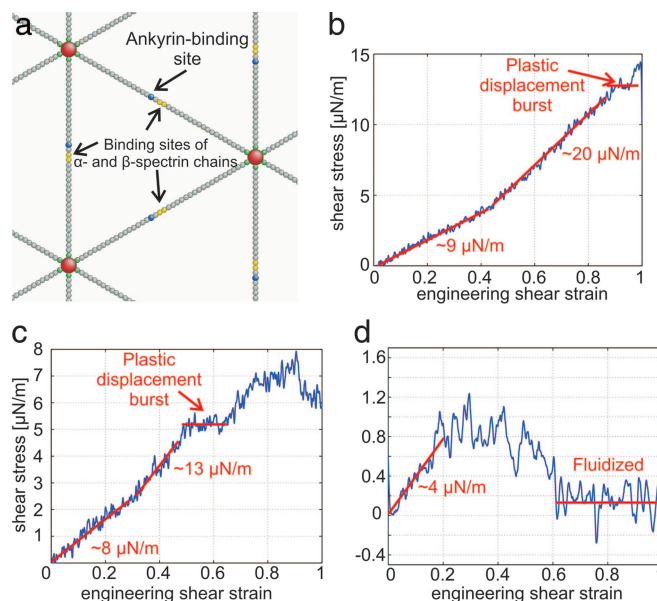


Fig. 5. Refined CD simulation. (a) A model with breakable actin–spectrin and/or α -spectrin– β -spectrin interaction. Red spheres represent actin protofilaments, and green, gray, blue, and yellow spheres represent a spectrin segment. Only the two ending spectrin units (green spheres) of a spectrin chain can bind to red sphere. (b) Shear stress–strain response of network at $\dot{\gamma} = 3 \times 10^5$ per s and dimer–dimer association energy of 0.6 eV. Corresponding shear stress–strain response of network at 3×10^5 per s and 0.56 eV (c) and 3×10^5 per s and 0.47 eV (d) are shown.

Dimer–Dimer Dissociation Due To Shearing. In Fig. 2b, two features of cytoskeleton are ignored: the confinements due to ankyrins and band 3 proteins (2) that also bind the spectrin to the membrane, and the possibility that a spectrin tetramer can dissociate into two heterodimers (3). These two aspects are considered here (Fig. 5a), where interest is shifted from spectrin–actin dissociation (due to locally delivered chemical energy) to the effects of dimer–dimer dissociation during shearing of the network. The strength of dimer–dimer association is known to be weaker than the actin–4.1–spectrin association, with equilibrium constant $K_4 \approx 1.5 \times 10^6 \text{ M}^{-1}$ (42). In Fig. 5a, the confinement due to ankyrin and band 3 protein is modeled by applying the same confinement potential $V_{\text{confine}}(z)$ to the blue beads, which were randomly placed two beads ahead of or behind the center of each chain. Rupturing of the chain (symbolizing dissociation of a spectrin tetramer into dimers) was allowed to occur in the middle between the two yellow beads. The original harmonic potential $k_0(r - r_0)^2/2$ between the yellow beads B' was substituted by a Lennard–Jones potential $V_{B'B'} = 4\varepsilon_{B'B'} \left(\left(\frac{\sigma}{r + r_0} \right)^{12} - \left(\frac{\sigma}{r + r_0} \right)^6 \right)$, which has similar characteristics as V_{AB} . The only difference is that the minimum of $V_{B'B'}$ is shifted to r_0 , which is the equilibrium distance between all spectrin beads.

As above, the perfect triangular network was initially heated from $T = 0$ to 300 K while the internal pressure was kept close to zero. $\varepsilon_{B'B'}$ was varied from 0.6 eV to 0.47 eV (that is, from 100% to 78% of the actin–spectrin association energy ε). This choice resulted in an equilibrated network of reduced integrity. In particular, although all of the actin–spectrin connections were unbroken ($\langle d \rangle = 6$), the integrity at $T = 300 \text{ K}$ of the dimer–dimer associations varies from 100% to $\approx 90\%$. Next, the same simple shear deformation was applied to model networks of various integrities at a strain rate of $\dot{\gamma} = 3 \times 10^5$ per s. No specific biochemical energy hits were injected at the network associations, and only mechanical energy was supplied.

In the first simulation (Fig. 5b), $\varepsilon_{B'B'} = 0.6 \text{ eV}$, whereas the integrity of dimer–dimer connections at $T = 300 \text{ K}$ was 100%. The

response of the network was initially similar to the response shown in Fig. 3c, where no dimer–dimer dissociation was allowed. At small strains, it exhibited an elastic shear modulus of $\approx 9 \mu\text{N/m}$. Then, at $\approx 45\%$ strain, it became stiffer with a shear modulus of $20 \mu\text{N/m}$. At 90% strain, where the shear stress reached the value of $\approx 12.5 \mu\text{N/m}$, a plastic type displacement burst occurred. This burst was caused by dimer–dimer dissociations, because the integrity of actin–spectrin associations was 100% throughout the numerical experiment. At $\varepsilon_{B'B'} = 0.56 \text{ eV}$ (7% lower than ε) the response of the network is shown in Fig. 5c. It initially exhibited a shear modulus of $\approx 8 \mu\text{N/m}$, slightly lower than in the previous case. At 25% strain, the network shows a larger tangent modulus of $13 \mu\text{N/m}$. At $\approx 45\%$ strain, a plastic displacement burst occurred. Then the response was elastic with a tangent shear modulus of $13 \mu\text{N/m}$, until 80% shear strain where another plastic displacement burst started.

At $\varepsilon_{B'B'} = 0.47 \text{ eV}$ (22% lower than ε), which corresponds to 91% integrity of the dimer–dimer connections, the response of the spectrin network to shear deformation changed dramatically (Fig. 5d). Initially, the spectrin network showed a linear elastic behavior with a reduced shear modulus of $\approx 4 \mu\text{N/m}$. From 20% until 50% , the shear stress was constant. Finally, at 60% strain, the shear stress response almost vanished and the cytoskeleton fluidized.

In the case of dimer–dimer dissociation due to shearing, the yield strain depends on the association energy between the dimers. The spectrin network was first heated from 0 to 300 K and then equilibrated. SI Table 3 shows that, during the above procedure, the resulting spectrin network integrity at the equilibrium reduced from almost 100% at $\varepsilon_{B'B'} = 0.6 \text{ eV}$ to 91% at $\varepsilon_{B'B'} = 0.47 \text{ eV}$. The yield strain was also reduced from 90% to 20% , respectively. The “thermal equilibrium” dimer content depends on $k_B T / \varepsilon_{B'B'}$. The plastic strain threshold is very sensitive to the above dimer content, because when $k_B T / \varepsilon_{B'B'}$ is raised, not only do we have more dimers, but even the existing tetramers are severely weakened by entropic elasticity. The trend of our results matches very well with the experimental data presented in ref. 3. There, it was shown that the cell wall stability decreases when the dimer content of the RBC increases. The most striking outcome of the above work (3) is the observation that shear deformation induces dissociation of tetramers into dimers. This finding matches our numerical results, which

show a progressive decrease of the dimer–dimer association integrity during shearing (SI Fig. 7).

Discussion and Concluding Remarks

We have developed a cytoskeletal dynamics simulation framework that allows active remodeling of the 3D cytoskeleton via breakable as well as reformable associations of the junction complex and spectrin tetramer. Possible roles of external shear stress (related to deformability of healthy RBC at large strains), specific chemical energy (i.e., ATP, as a possible means to actively adjust RBC deformability in circulation), and protein association strength (possibly related to RBC disease states with weakened/broken cytoskeletal connectivity) versus temperature and strain rate can be studied parametrically by using the proposed model. These results offer mechanistic rationale for the erythrocyte cytoskeleton mechanical function under loading. The model demonstrates that cytoskeletal remodeling through specific biochemical activation is a possible means for RBC deformability to be actively “tuned” during its circulation in microvasculature. On one hand, structural integrity of the cell demands certain minimal properties of the cytoskeleton. For instance, the largest flaw in the RBC cytoskeleton cannot exceed a critical size, otherwise lipid membrane loss will occur via the vesiculation instability (49). On the other hand, RBC also encounters different environments (artery, capillary, splenic sinus, etc.) and mechanical conditions in circulation, and its mechanical properties may need to change “on the fly” (50). The relative influence of mechanical stress during constrained shear flow, energy exchange and biochemical modification of dimer–dimer or actin–spectrin binding energy is largely unknown at this time, and could depend on the natural variations in the cytoskeletal structures in a given population of cells and the local biochemical environment. Our parametric CD model is a first step toward unraveling possible mechanistic underpinnings of these complex, intertwined pathways.

We thank David J. Quinn for preparing the images in Fig. 1 from microfluidics experiments conducted in the laboratory of S.S. This work was supported by National Institutes of Health/National Institute of General Medical Sciences Grant 1-R01-GM076689-01.

- Bennett V (1985) *Annu Rev Biochem* 54:273–304.
- Mohandas N, Evans E (1994) *Annu Rev Biophys Biomol Struct* 23:787–818.
- An XL, Lecomte MC, Chasis JA, Mohandas N, Gratzer W (2002) *J Biol Chem* 277:31796–31800.
- Cloitre M, Borrega R, Leibler L (2000) *Phys Rev Lett* 85:4819–4822.
- Bursac P, Lenormand G, Fabry B, Oliver M, Weitz DA, Viasnoff V, Butler JP, Fredberg JJ (2005) *Nat Mater* 4:557–561.
- Pinder JC, Bray D, Gratzer WB (1977) *Nature* 270:752–754.
- Manno S, Takakuwa Y, Mohandas N (2005) *J Biol Chem* 280:7581–7587.
- Weed RI, Lacelle PL, Merrill EW (1969) *J Clin Invest* 48:795–809.
- Birchmeier W, Singer SJ (1977) *J Cell Biol* 73:647–659.
- Lutz HU, Liu SC, Palek J (1977) *Experientia* 33:796–796.
- Sackmann E (1994) *FEBS Lett* 346:3–16.
- Gov NS, Safran SA (2005) *Biophys J* 88:1859–1874.
- Mills JP, Qie L, Dao M, Lim CT, Suresh S (2004) *Mech Chem Biosyst* 1:169–180.
- Li J, Dao M, Lim CT, Suresh S (2005) *Biophys J* 88:3707–3719.
- Humpert C, Baumann M (2003) *Mol Membr Biol* 20:155–162.
- Canham PB (1970) *J Theor Biol* 26:61–81.
- Helfrich W (1973) *Z Naturforsch* C28:693–703.
- Lim HWG, Wortis M, Mukhopadhyay R (2002) *Proc Natl Acad Sci USA* 99:16766–16769.
- Marcelli G, Parker KH, Winlove CP (2005) *Biophys J* 89:2473–2480.
- Stillinger FH, Weber TA (1985) *Phys Rev B* 31:5262–5271.
- Takeuchi M, Miyamoto H, Sako Y, Komizu H, Kusumi A (1998) *Biophys J* 74:2171–2183.
- Swihart AH, Mikrut JM, Ketterson JB, MacDonald RC (2001) *J Microsc (Oxford)* 204:212–225.
- Liu F, Mizukami H, Sarnaik S, Ostafin A (2005) *J Struct Biol* 150:200–210.
- McGreevy RL (2001) *J Phys Cond Mat* 13:R877–R913.
- Eber S, Lux SE (2004) *Semin Hematol* 41:118–141.
- Gallagher PG (2004) *Semin Hematol* 41:142–164.
- Hansen JC, Skalak R, Chien S, Hoger A (1996) *Biophys J* 70:146–166.
- Stamenovic D, Fredberg JJ, Wang N, Butler JP, Ingber DE (1996) *J Theor Biol* 181:125–136.
- Discher DE, Boal DH, Boey SK (1998) *Biophys J* 75:1584–1597.
- Vera C, Skelton R, Bossens F, Sung LPA (2005) *Ann Biomed Eng* 33:1387–1404.
- Bennett V, Baines AJ (2001) *Physiol Rev* 81:1353–1392.
- Ohanian V, Wolfe LC, John KM, Pinder JC, Lux SE, Gratzer WB (1984) *Biochemistry* 23:4416–4420.
- Tyler JM, Reinhardt BN, Branton D (1980) *J Biol Chem* 255:7034–7039.
- Gov N, Safran SA (2004) *Phys Rev E* 69:011101.
- Berendsen HJC, Postma JPM, Vangunsteren WF, Dinola A, Haak JR (1984) *J Chem Phys* 81:3684–3690.
- Lutsko JF (1988) *J Appl Phys* 64:1152–1154.
- Ermak DL, McCammon JA (1978) *J Chem Phys* 69:1352–1360.
- Dao M, Li J, Suresh S (2006) *Mater Sci Eng C* 26:1232–1244.
- Kurchan J (2005) *Nature* 433:222–225.
- Howard J (2001) *Mechanics of Motor Proteins and the Cytoskeleton* (Sinauer, Sunderland, MA).
- Druger SD, Nitzan A, Ratner MA (1983) *J Chem Phys* 79:3133–3142.
- Ungewickell E, Gratzer W (1978) *Eur J Biochem* 88:379–385.
- Fung YC (1993) *Biomechanics: Mechanical Properties of Living Tissues* (Springer, New York).
- Fabry B, Maksym GN, Butler JP, Glogauer M, Navajas D, Taback NA, Millet EJ, Fredberg JJ (2003) *Phys Rev E* 68:041914.
- Sollich P (1998) *Phys Rev E* 58:738–759.
- Martin G (1984) *Phys Rev B* 30:1424–1436.
- Fabry B, Fredberg JJ (2003) *Respir Physiol Neuro* 137:109–124.
- Li J, Van Vliet KJ, Zhu T, Yip S, Suresh S (2002) *Nature* 418:307–310.
- Knowles DW, Tilley L, Mohandas N, Chasis JA (1997) *Proc Natl Acad Sci USA* 94:12969–12974.
- Yap B, Kamm RD (2005) *J Appl Physiol* 98:1930–1939.